

# CoCo-80 USB DRIVER INSTALLATION – WINDOWS VISTA, 7, 8, 8.1 AND 10 OS

**Purpose:**

The USB connection is the easiest method to connect the CoCo-80 to a PC. This requires the following steps:

- Install the EDM software on the PC.
- Connect CoCo-80 to the PC through the provided USB cable. This cable has a mini-client port connecting to the CoCo-80 and a flat USB port connecting to the PC.
- Install the RNDIS USB driver on the PC.

The following procedures describe how to install the RNDIS USB driver on the PC. This installation assumes that the user has an installation CD that includes the device driver files.

**OS:**

Windows Vista, 7, 8, 8.1 and 10

**Version:**

All CoCo-80 and CoCo-90

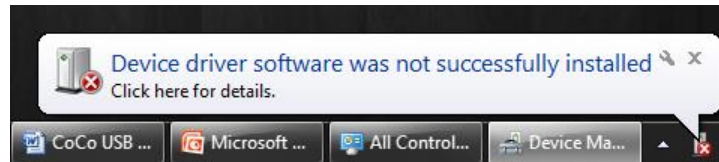
- Windows Vista and 7: Start Step 1. Skip Step 2 through 4.
- Windows 8 and 8.1: Skip Step 1. Start from Step 2.
- Windows 10: Skip Step 1 and 2. Start from Step 3c.

## STEP 1: WINDOWS VISTA AND 7

Connect device using USB interface with PC, system will show a **Found New Hardware** message.




Windows will fail to install the driver.

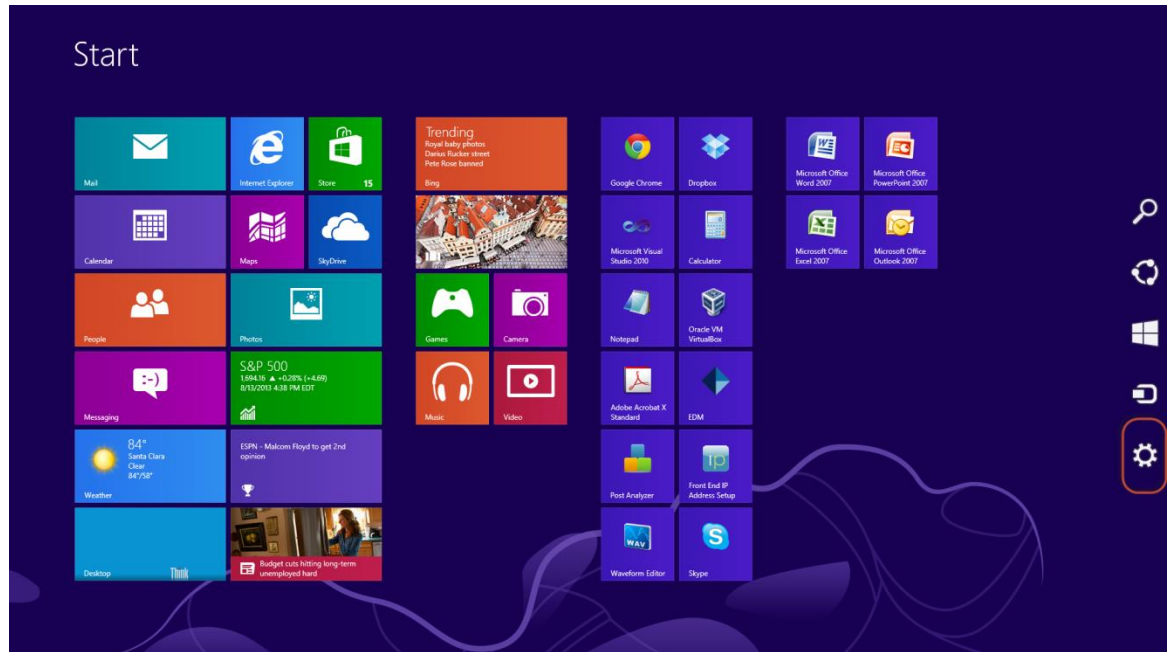


Move on to **Step 6.**

## STEP 2: WINDOWS 8 AND 8.1

From the **Start Screen**, open **Settings** (move your mouse to either corner right side of the screen, drag mouse up/down for the charm bar to appear) or [**Window Key**  + C].

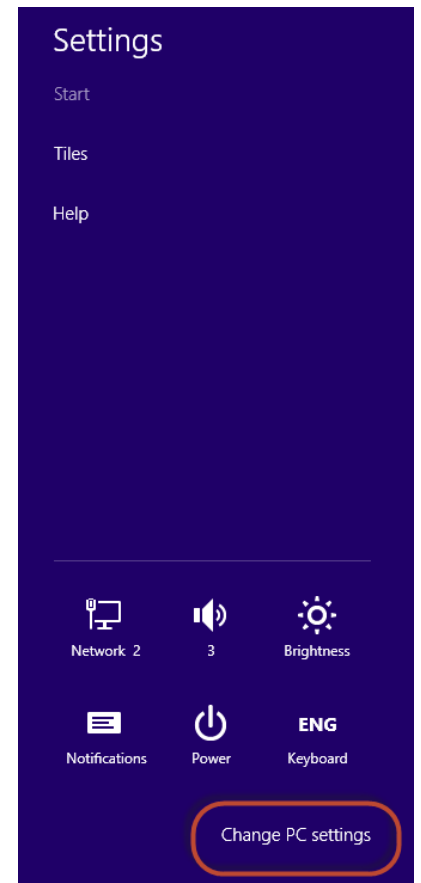
Then click the **Gear icon**.



Click **Change PC Settings**.

### Note:

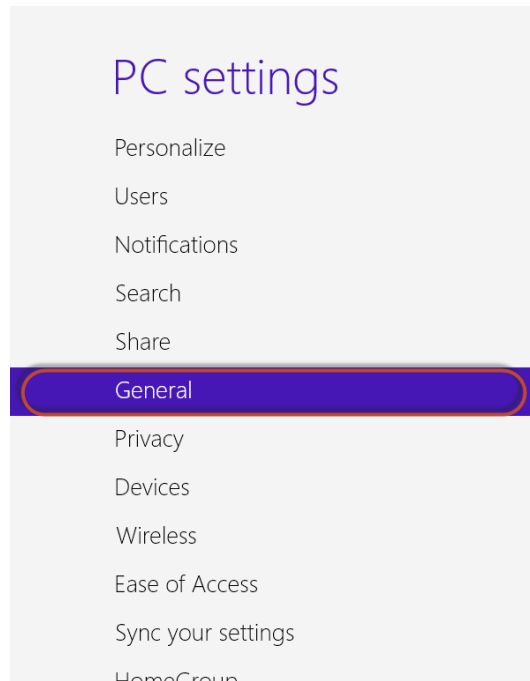
For **Windows 8**, continue to **Step 3a**.  
For **Windows 8.1**, continue to **Step 3b**.  
For **Windows 10**, Start at **Step 3c**.



## STEP 3A: (WINDOWS 8)

Click **General**.

Scroll down, and click **Restart now** under **Advanced startup**.



Language preferences

Available storage

You have 56.7 GB available. See how much space your apps are using.

**View app sizes**

Refresh your PC without affecting your files

If your PC isn't running well, you can refresh it without losing your photos, music, videos, and other personal files.

**Get started**

Remove everything and reinstall Windows

If you want to recycle your PC or start over completely, you can reset it to its factory settings.

**Get started**

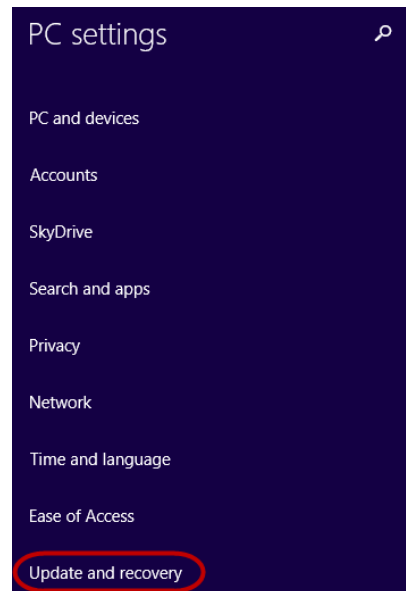
Advanced startup

Start up from a device or disc (such as a USB drive or DVD), change Windows startup settings, or restore Windows from a system image. This will restart your PC.

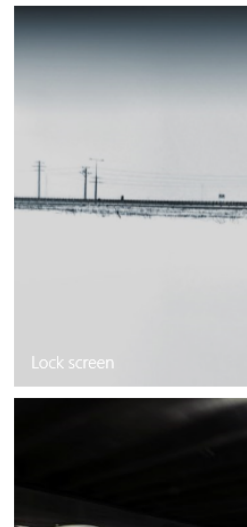
**Restart now**

## STEP 3B: (WINDOWS 8.1)

Click **Update and Recovery**

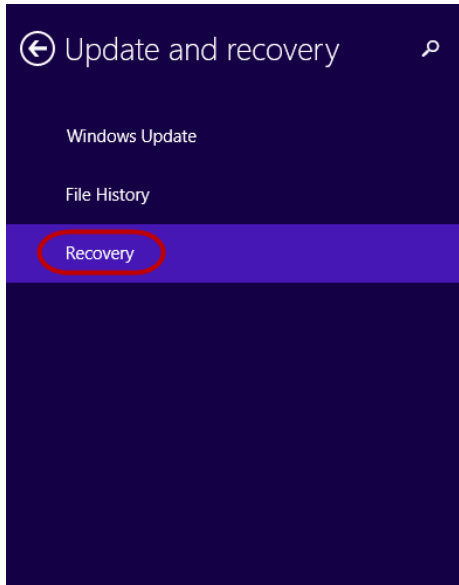


Personalize



Upon the screen below, click on the **Recovery** tab on the left side

Click **Restart now** under **Advanced startup**.



### Refresh your PC without affecting your files

If your PC isn't running well, you can refresh it without losing your photos, music, videos, and other personal files.

**Get started**

### Remove everything and reinstall Windows

If you want to recycle your PC or start over completely, you can reset it to its factory settings.


**Get started**

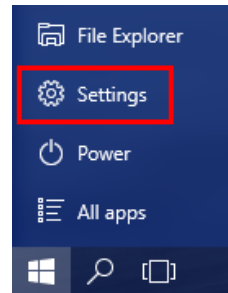
### Advanced startup

Start up from a device or disc (such as a USB drive or DVD), change Windows startup settings, or restore Windows from a system image. This will restart your PC.

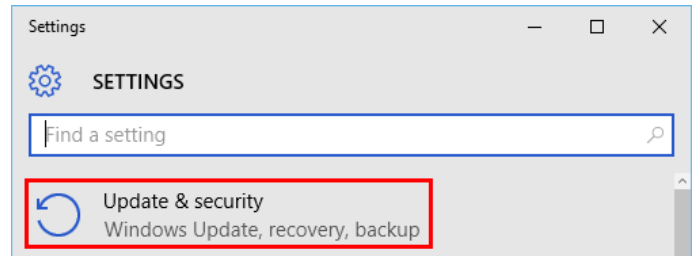
**Restart now**

## STEP 3C: (WINDOWS 10)

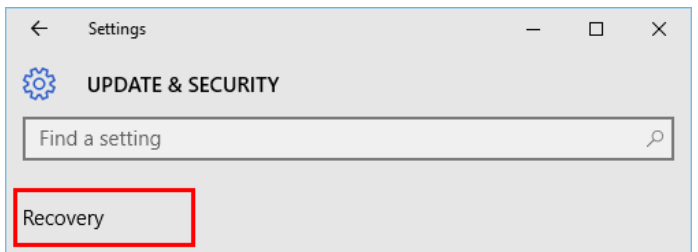
Click **Start** menu icon  and select **Settings**.



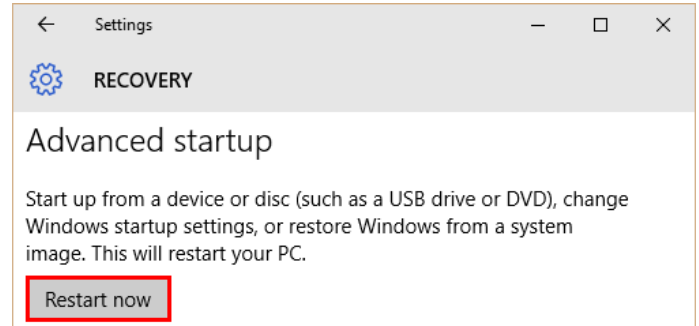
Under **Settings** windows, select



Choose **Recovery**.

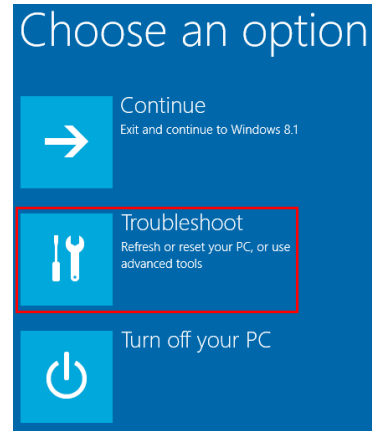


Choose **Advanced startup**

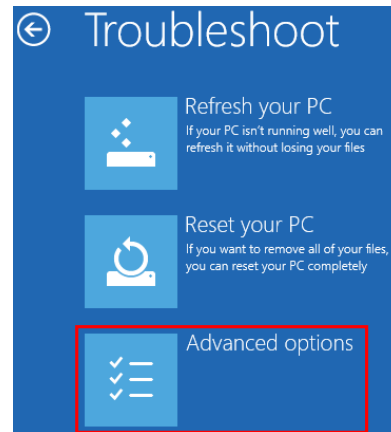


**STEP 4:**

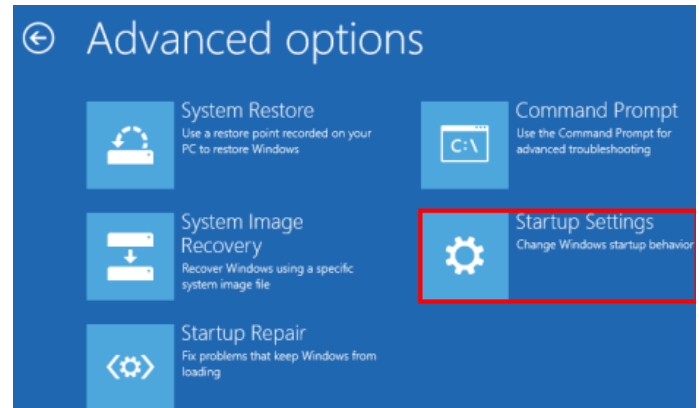
Click **Troubleshoot**



Click **Advanced Options**



Click Windows **Startup Settings**



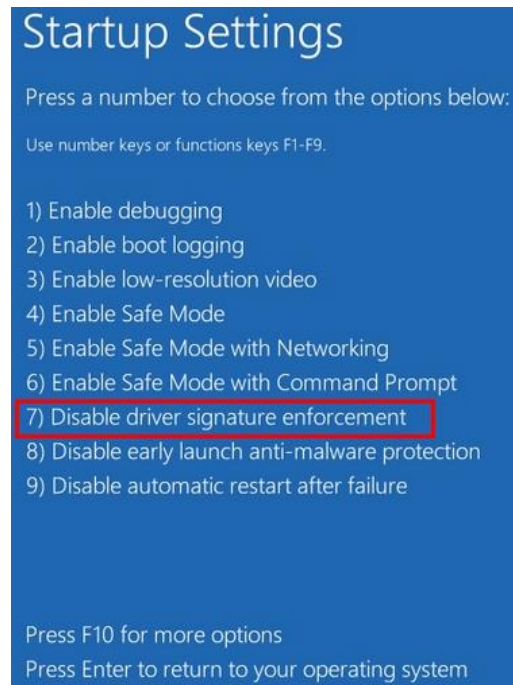
**Driver Signature** check disable.

Click **Restart**



After system reconfigures, the screen below will appear momentary

Press **F7** on the Keyboard to select Option **7**.

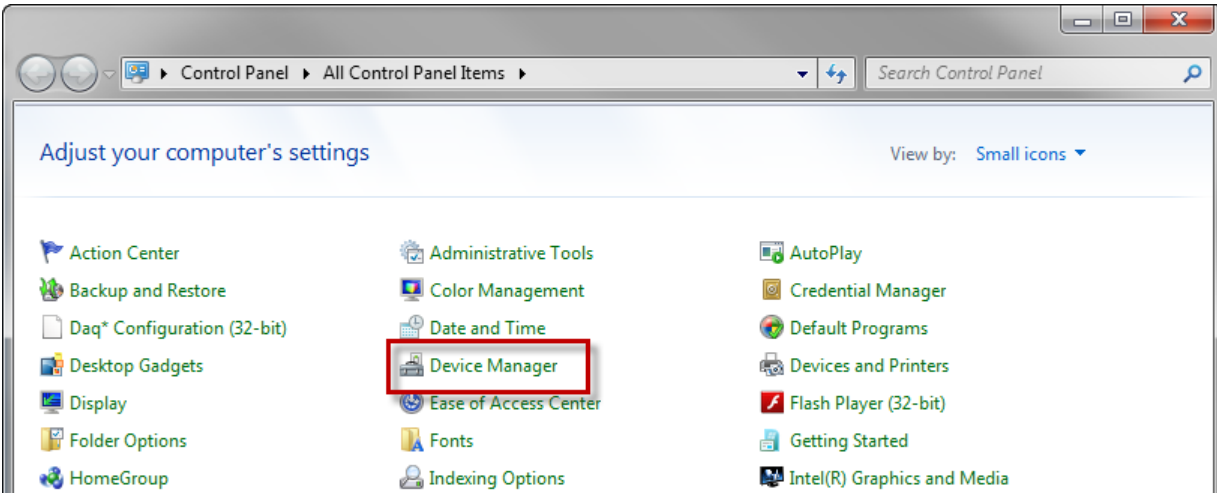


Wait for PC to boot up.

## STEP 5:

Once PC is booted up, open the **Control Panel**. In the upper right corner of the **Control Panel**, select **View by: Small Icons**.

Select **Device Manager**.



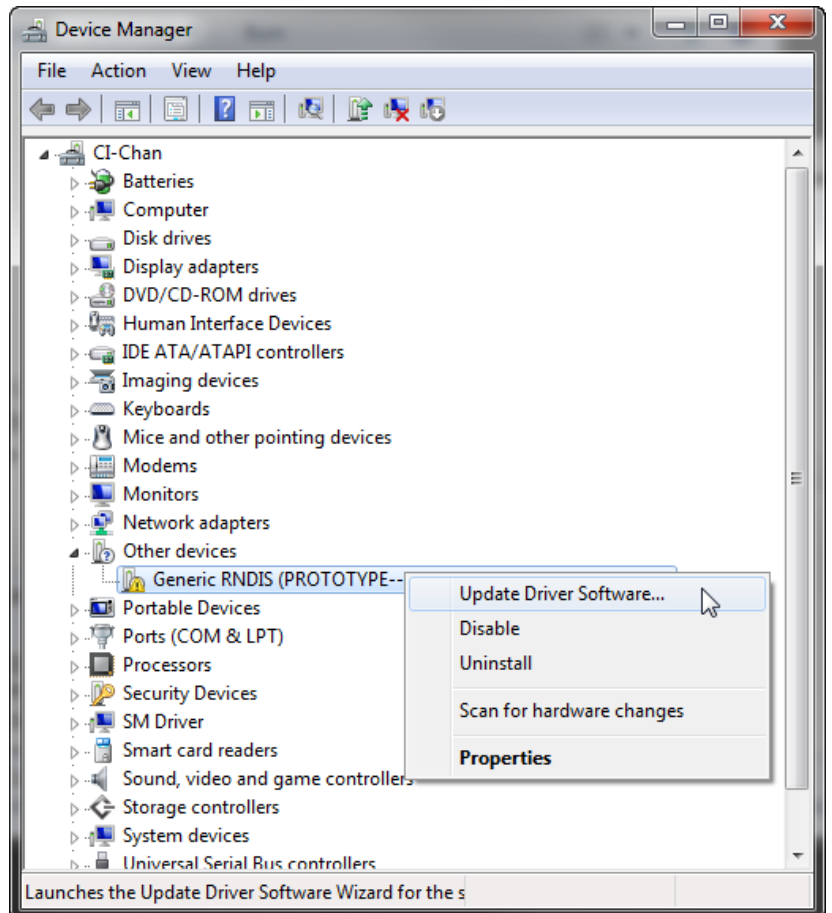
For Windows 8, 8.1 and 10, simply press [ **Windows** + S ] on keyboard to activate search menu and type **Device Manager**.



## STEP 6A: (WINDOWS VISTA, 7, 8 AND 8.1)

The CoCo will be displayed in **Device Manager** under **Other devices** and will be labeled "**Generic RNDIS...**"

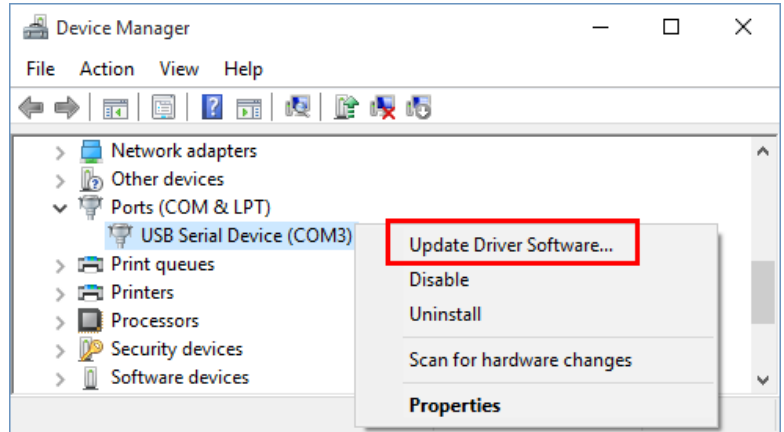
Right-click on this device and select **Update Driver Software....**



## STEP 6B: (WINDOWS 10)

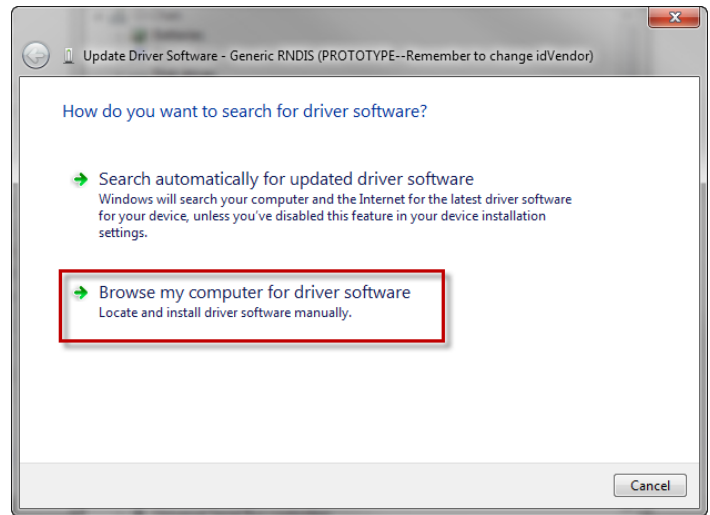
The CoCo will be displayed in **Device Manager** under **Ports (COM & LPT)** as **USB Serial Device (COM3)**.

Right-click on this device and select **Update Driver Software...**

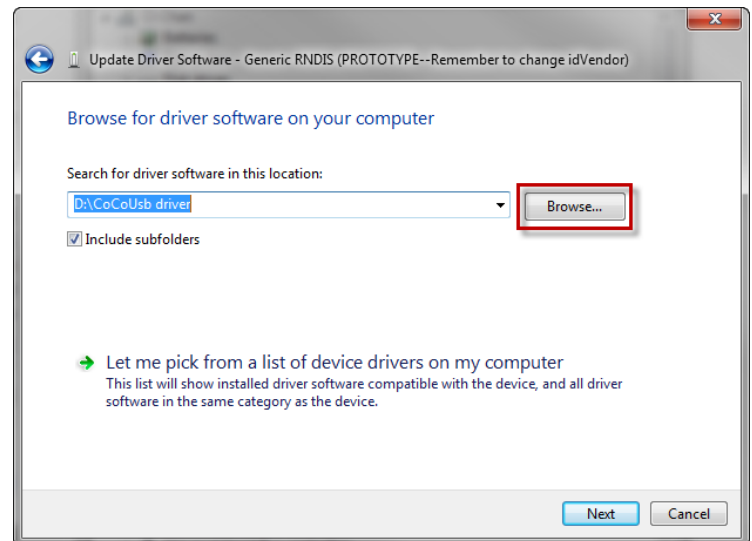


## STEP 7A: (WINDOWS VISTA, 7, 8 AND 8.1)

Select **Browse my computer for driver software:**

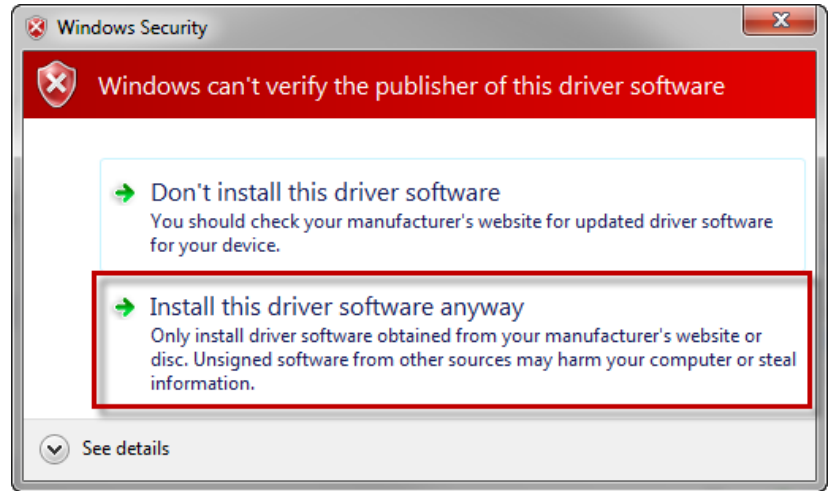


Click **Browse** button, then select the **CoCoUsb driver** folder on the CoCo-80 software CD and click **Next**.

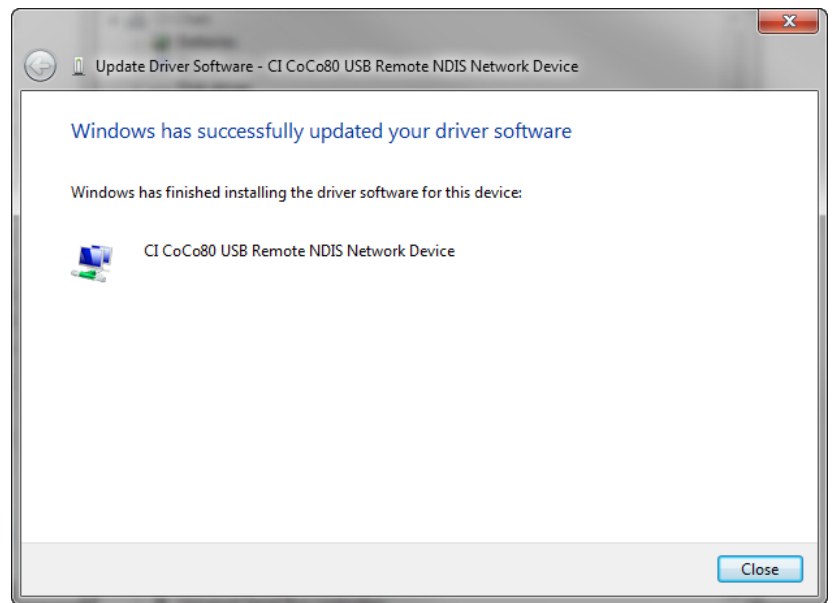




Click **Install this driver software anyway** when the following dialog box appears:

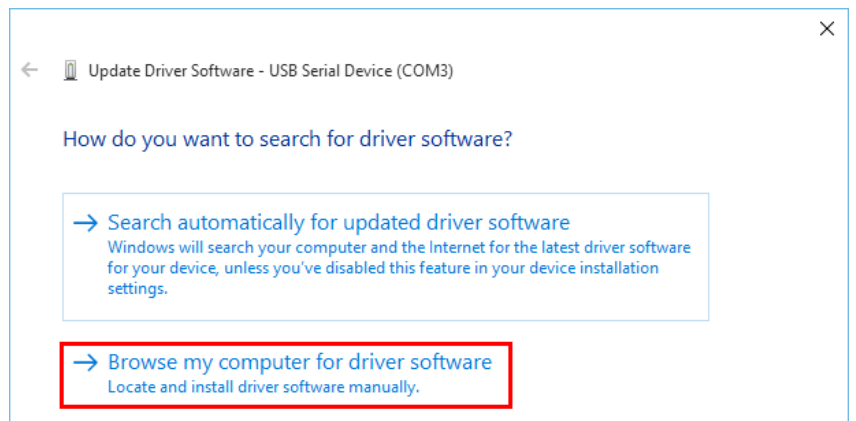


Windows will copy the necessary files. The following window will appear when the installation is complete.

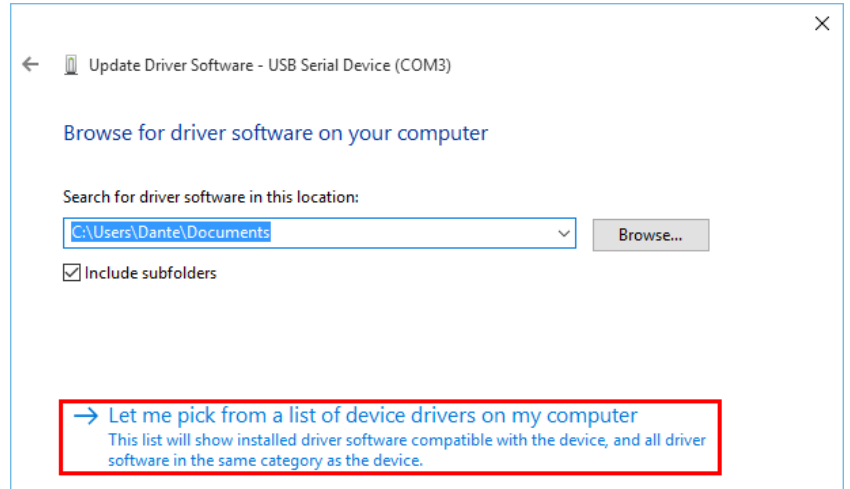


## STEP 7B: (WINDOWS 10)

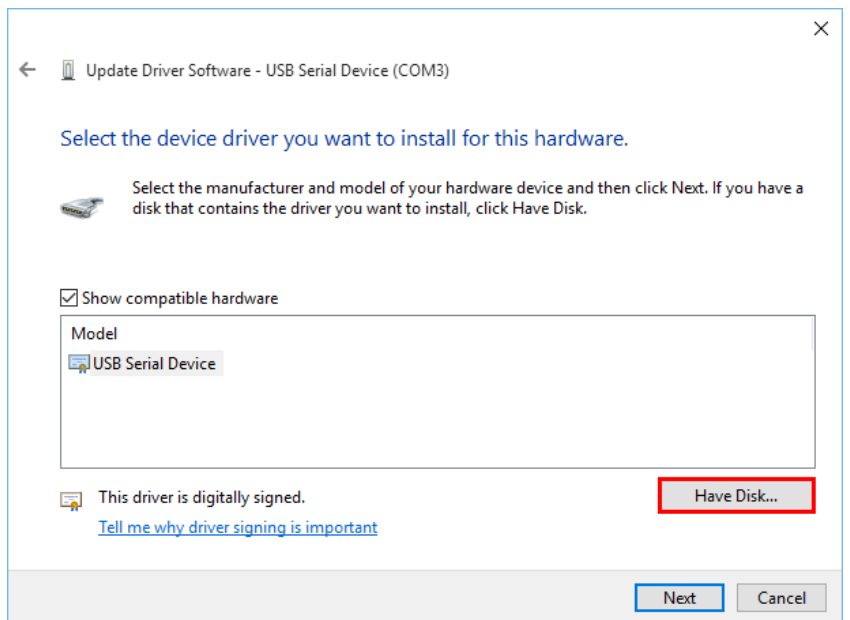
Select **Browse my computer for driver software**.



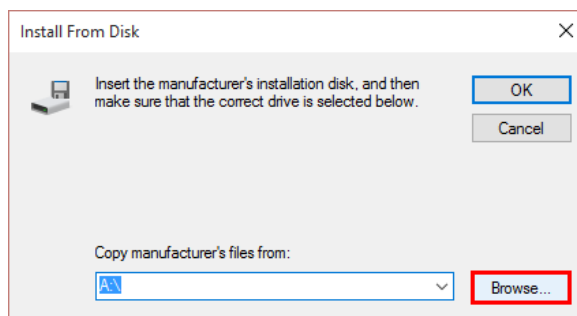
Select **Let me pick from a list of device drivers on my computer.**



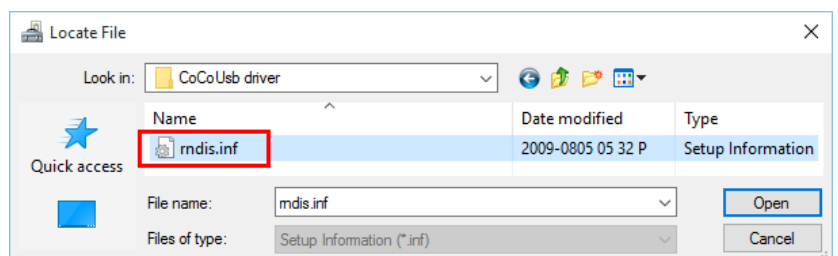
Click on **Have Disk...** button



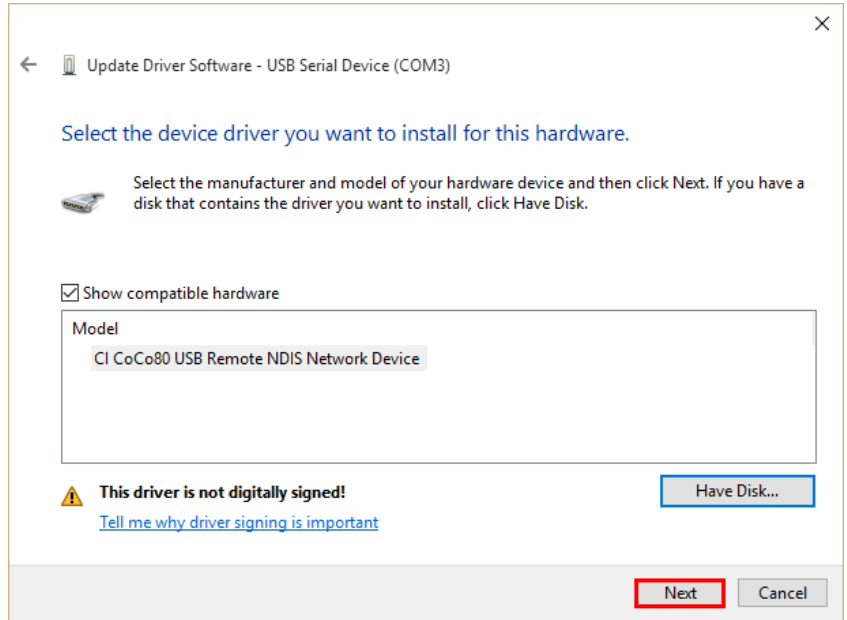
Click on **Browse...** button



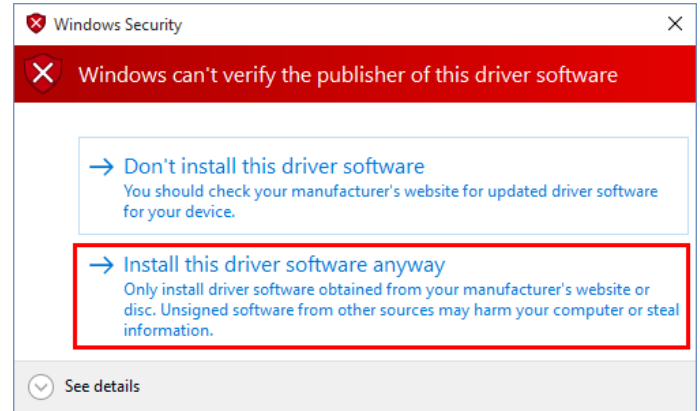
Browse to the **CoCoUsb driver file [rndis.inf]** on the CoCo-80 software CD and click **Open.**



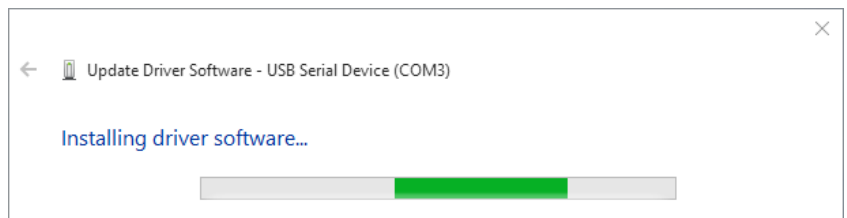
Click **Next**.



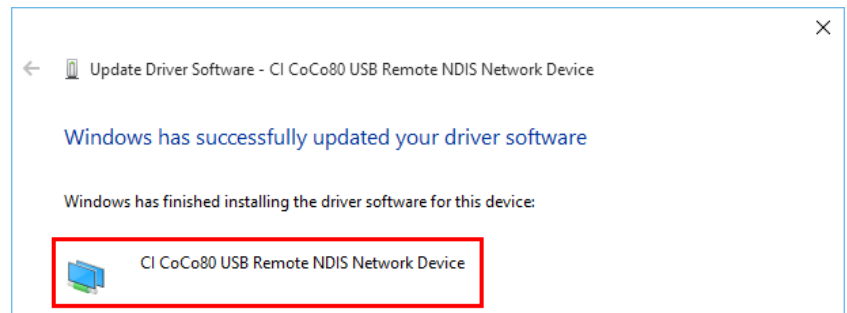
Windows Security dialog box will appear, select **[Install this driver software anyway]**.



Windows will finish the installation and confirm if the installation is successful.



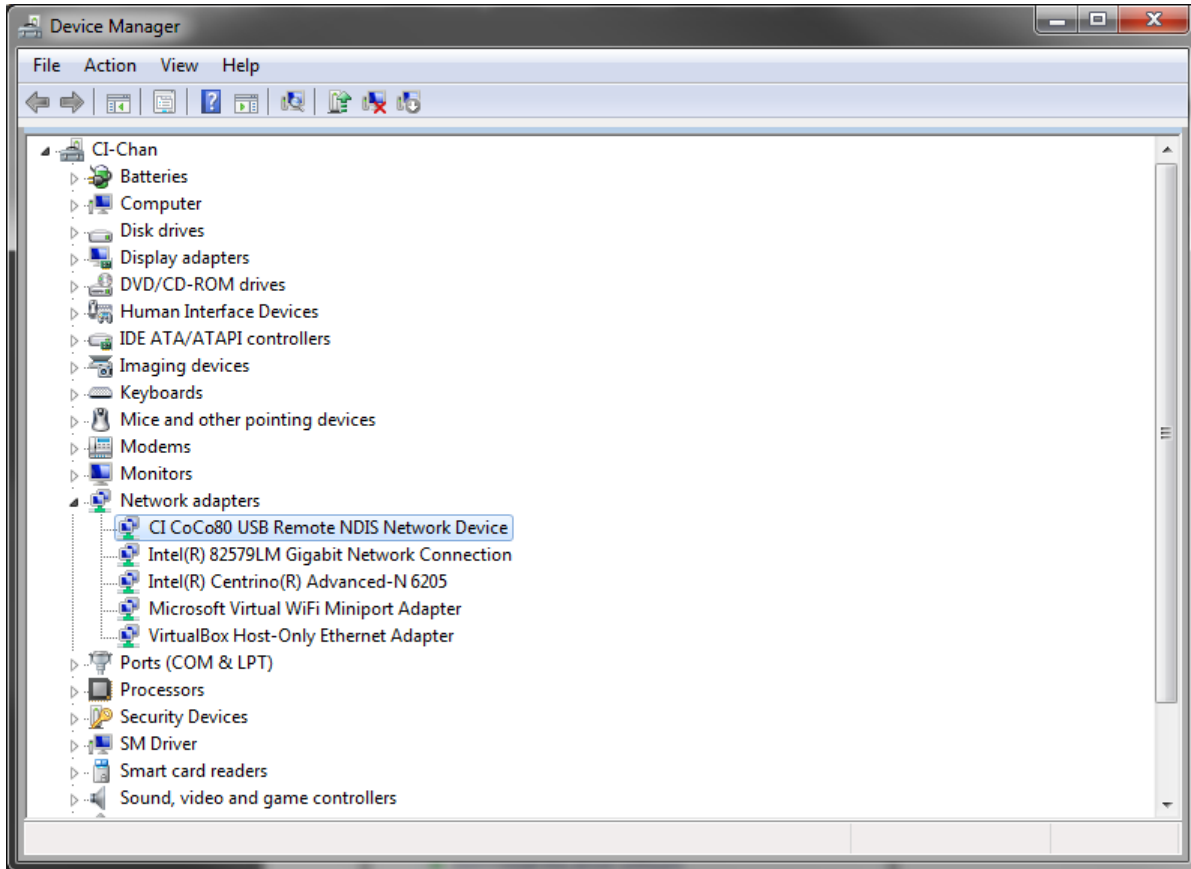
Confirmation



## STEP 8:

To confirm, you can use the **Device Manager** of Windows, if an item called **CI CoCo80 USB Remote NDIS Network Device** appears under the **Network Adapters**, the driver has been installed successfully.

Windows Vista, 7, 8 and 8.1:



Windows 10:

